

SILQUEST* A-Link* 597 silane

SILANES - ADHESIVES & SEALANTS ADDITIVES



Silquest A-Link 597 silane functions as an adhesion promoter for a variety of substrate/matrix resin combinations. It is especially useful in high performance hot melt adhesives and other applications where exposure to sustained temperatures might occur.

Key Features and Typical Benefits

- improved adhesion to difficult substrates such as plastics, glass and metals including aluminum and steel
- thermal stability at 200°C
- high boiling point, low volatility for better silane retention in hot melt adhesive application conditions
- compatible with most hotmelt resins

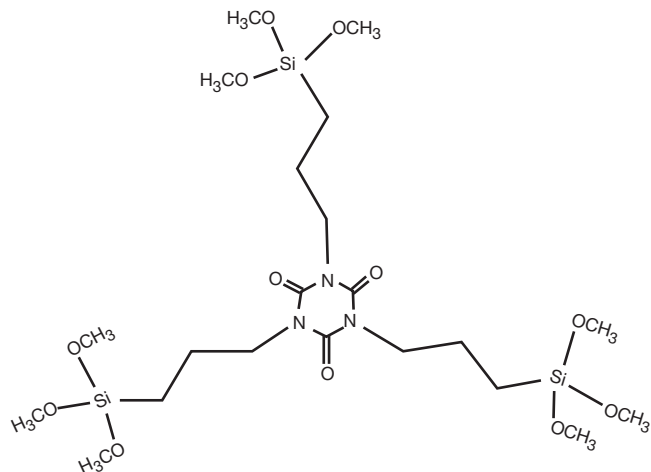
Structural Feature	System Benefit
High concentration of groups	Provides effective adhesion to a trimethoxy silyl variety of substrates.
Isocyanurate chemistry	Polar structure provides good solubility in most resins, good wetting of most substrates, imparts thermal resistance and low volatility to the adhesion promoter.

Typical Physical Properties	
Appearance	Clear liquid
Specific Gravity at 25/25°C	1.170
Viscosity, cSt	95
Flash Point, Pensky-Martens Closed Cup, ASTM D93, °C (°F)	102 (216)
Boiling Point at 0.05mm Hg, °C	230

*Silquest and A-Link are trademarks of Momentive Performance Materials Inc.

SILQUEST* A-Link* 597 silane

Chemical Structure



Tris(3-(trimethoxysilyl)propyl)isocyanurate (Mol. Wt. 616)
Silquest A-Link 597 silane

Potential Applications

Silquest A-Link 597 silane demonstrates excellent adhesion promoter properties when evaluated in SPUR⁺ prepolymer-based sealants and in commercial hot melt adhesives.

Silquest A-Link 597 Silane Adhesion Promoter in SPUR⁺ Prepolymer and Sealants:

Illustrative of its effectiveness in SPUR⁺ prepolymer sealants is shown by first the preparation of SPUR⁺ prepolymers based on either a 4,000 or 8,000 molecular weight, low monol content polypropylene diol using IPDI. The NCO/OH ratio was 1.5 and 15 ppm dibutyltin dilaurate used as catalyst per a previously reported procedure. These prepolymers were capped with Silquest A-Link 15 then formulated into low filler SPUR⁺ prepolymer sealant formulation:

Sealant Formulation

Ingredients	Weight (g)
SPUR ⁺ prepolymer	250
Plasticizer	100
Moisture Scavenger (Silquest A-171* silane)	3.75
Calcium Carbonate	250
UV Stabilizers	5
Thixotropic Agent	15
TiO ₂	7.5
Silane Adhesion Promoter	3,75
Catalyst (Fomrez** SUL-4)	0.16

**Fomrez is a trademark of Chemtura Corporation

For comparison a number of silanes were added as the silane

Commercial Name	Structure
Silquest A-1170 silane	$\text{HN}[\text{---} \text{Si}(\text{OCH}_3)_3]_2$
Silquest A-1100* silane	$\text{NH}_2 \text{---} \text{Si}(\text{OCH}_2\text{CH}_3)_3$
Silquest A-Link 597 silane	

SILQUEST* A-Link* 597 silane

Potential Applications (continued)

The impact of each silane on SPUR* prepolymer-based sealant properties was evaluated using ASTM specifications. Tensile strength, elongation, modulus (ASTM D 412), shore A (ASTM C 661) and tear resistance (ASTM D 624) data were obtained on samples cured according to the following schedule: 1 week at 50°C (122°F) 85% relative humidity, 1 week at 25°C (73°F) 50% relative humidity, 1 week at 50°C (122°F) 85% relative humidity.

Silquest A-Link 597 has a low basicity and dispersed alkoxy groups relative to other adhesion promoters, which results in sealants displaying excellent elastomeric properties.

Mechanical Properties of Various Adhesion Promoters in SPUR⁺ Prepolymer Sealants Silane

Silane	Tensile Strength psi (mPa)	Young's Modulus psi (mPa)	Elongation %	Tear lb/in (N/mm)	Shore A
SPUR⁺ Sealant Based on an 4,000 Molecular Weight, Low Monol Content Polypropylene Diol					
Silquest A-1170 silane	144 (0.99)	342 (2.36)	69	16.8 (2.94)	43
Silquest A-1100* silane	225 (1.55)	300 (2.07)	128	19.5 (3.42)	45
Silquest A-Link 597 silane	191 (1.32)	242 (1.67)	158	22.9 (4.01)	39
SPUR⁺ Sealant Based on an 8,000 Molecular Weight, Low Monol Content Polypropylene Diol					
Silquest A-1170 silane	198 (1.37)	209 (1.44)	199	23.8 (4.17)	36
Silquest A-1100 silane	214 (1.48)	177 (1.27)	204	28.1 (4.92)	35
Silquest A-Link 597 silane	225 (1.55)	141 (0.97)	365	34.8 (6.09)	30

SILQUEST* A-Link* 597 silane

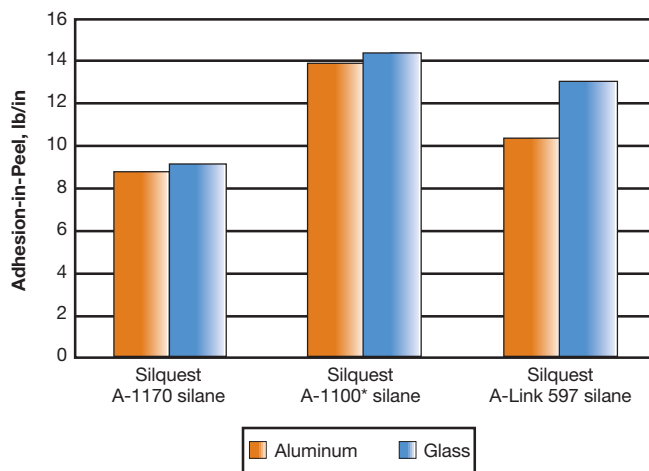
Potential Applications (continued)

SPUR⁺ prepolymer sealant adhesion-in-peel testing from aluminum and glass in accordance with the ASTM C 794 procedure was evaluated. Curing was per above protocol for the physical properties testing followed by water immersion for 1 week then dried by paper towel prior to testing. In Figure 1 (at right) Silquest A-Link 597 added to the SPUR⁺ prepolymer based on an 8,000 molecular weight, low monol content polypropylene diol, clearly exhibits improved adhesion to difficult substrates without sacrificing the flexibility of sealants as do aminosilane adhesion promoters.

Silquest A-Link 597 Silane Adhesion Promoter in Commercial Hot Melt Adhesives:

The low volatility and excellent oxidative stability of Silquest A-Link 597 silane also makes it ideally suited for hot melt adhesive applications where improved adhesion is desired. To determine what effect Silquest A-Link 597 silane has on the typical physical properties of hot melt adhesives (HMA) blends of several commercial HMAs, EVA hot melt adhesive and polyamide adhesive as shown in the table following. HMA physical properties were evaluated for the formulations shown in the table below. These were cured by water soaking for two weeks at room temperature followed by conditioning 24 hours at 50°C prior to testing. Physical property results revealed that Silquest A-Link 597 silane may affect some physical properties specific to HMA type. For example the polyamide adhesive HMA showed increased tensile, modulus and elongation properties while the EVA hot melt adhesive did not. These findings were typical for the other high temperature HMAs tested (polyolefins, polyester) and indicated that A-Link 597 silane might affect physical properties and this factor should be considered in the specific application.

Figure 1: Adhesion-in-Peel Test



Physical Properties of Commercial Hot Melt Adhesives with Silquest A-Link 597 Silane Adhesion Promoter

	Tensile psi (mPa)	100% Modulus psi (mPa)	Elongation %	Tear lbs/in (N/mm)
EVA Hot Melt Adhesive				
0%	469 (3.23)	468 (3.23)	96	198 (34.7)
0.50%	435 (3.00)	434 (3.00)	93	168 (24.4)
1.00%	597 (4.12)	591 (4.07)	88	204 (35.7)
1.50%	476 (3.28)	476 (3.28)	95	184 (32.2)
Polyamide Adhesive				
0%	473 (3.26)	380 (2.62)	56	240 (42.0)
0.50%	434 (3.00)	434 (3.00)	45	210 (36.8)
1.00%	705 (4.86)	-	62	263 (46.1)
1.50%	679 (4.68)	753 (5.19)	60	269 (47.1)

*Silquest, Silquest A-1100, A-Link and SPUR⁺ are trademarks of Momentive Performance Materials Inc.

SILQUEST* A-Link* 597 silane

Potential Applications (continued)

Improved adhesion of these commercial HMAs with Silquest A-Link 597 was further evaluated by lap shear testing using various substrates. Samples were prepared with 0.5 inch x 1 inch overlap and 0.125 inch of adhesive thickness. Typical results are shown below. As in the SPUR+* prepolymer-based sealant case, Silquest A-Link 597 demonstrated effective adhesion promoter results. Optimum level was found to be dependent on the hot melt adhesive type, i.e. polyester, polyamide, EVA etc and should be evaluated on the specific HMA to be used.

Figure 2: Polyamide HMA

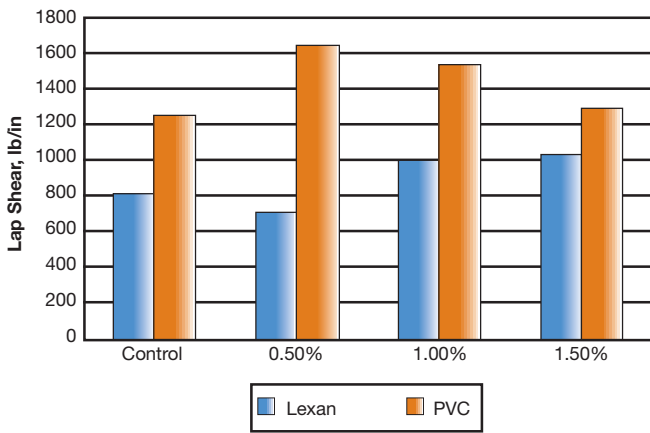
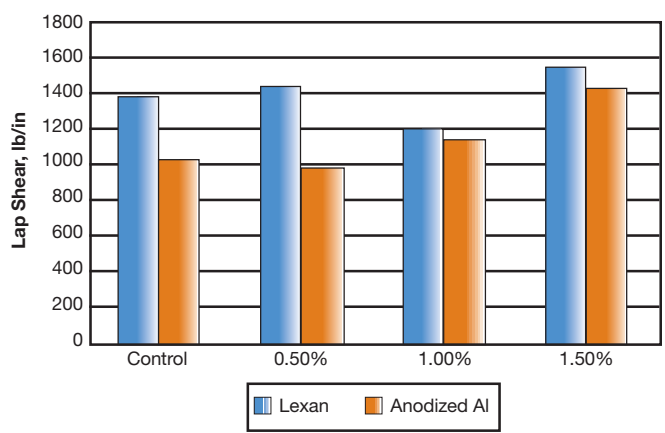


Figure 3: Polyester HMA

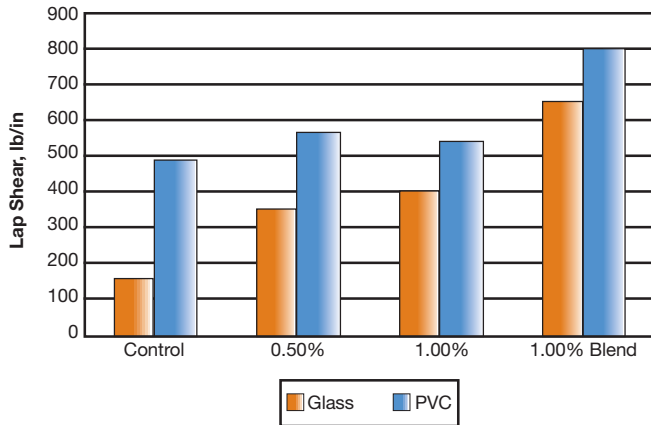


SILQUEST* A-Link* 597 silane

Potential Applications (continued)

Silquest A-Link 597 demonstrates enhanced adhesion as demonstrated for the EVA hot melt shown below. Further evaluation using a blended A-Link 597 with A-1100* at a 4/1-weight ratio blend enhanced lap shear adhesion. Such a blend can affect both mechanical and hot melt properties (viscosity, color, open time) therefore a thorough evaluation should be done prior to use.

Figure 4: EVA HMA



Silquest A-Link 597 silane has a characteristic low volatility and oxidative stability that makes it well suited as an adhesion promoter in both SPUR+* prepolymer-based sealants and higher temperature applications such as hot melt adhesives.

SILQUEST* A-Link* 597 silane

Patent Status

Nothing contained herein shall be construed to imply the nonexistence of any relevant patents or to constitute the permission, inducement or recommendation to practice any invention covered by any patent, without authority from the owner of the patent.

Product Safety, Handling and Storage

Customers considering the use of this product should review the latest Material Safety Data Sheet and label for product safety information, handling instructions, personal protective equipment if necessary, and any special storage conditions required. Material Safety Data Sheets are available at www.momentive.com or, upon request, from any Momentive Performance Materials representative. Use of other materials in conjunction with Momentive Performance Materials products may require additional precautions. Please review and follow the safety information provided by the manufacturer of such other materials.

Limitations

Customers must evaluate Momentive Performance Materials products and make their own determination as to fitness of use in their particular applications.

Emergency Service

Momentive Performance Materials maintains an around-the-clock emergency service for its products. The American Chemistry Council (CHEMTREC) and CareChem24 International also maintain an around-the-clock emergency service for all chemical products:

<u>Location</u>	<u>Momentive Performance Materials Products</u>	<u>All Chemical Products</u>
Mainland U.S., Puerto Rico	518.233.2500	CHEMTREC: 800.424.9300
Alaska, Hawaii	518.233.2500	CHEMTREC: 800.424.9300
Canada	518.233.2500	CHEMTREC: 800.424.9300
Europe	+518.233.2500 (Albanian, Czech, Danish, Dutch, English, Finnish, French, German, Greek, Hungarian, Italian, Lithuanian, Norwegian, Polish, Portuguese, Romanian, Russian, Serbo-Croatian, Slovak, Spanish, Swedish, Turkish, Ukrainian)	+44.(0)208.762.8322 (UK)
Middle East, All countries, except Israel	+518.233.2500	+961.3.487.287 (Lebanon)
Middle East, Israel	+518.233.2500	+44.(0)208.762.8322 (UK)
Latin America, Asia/Pacific, all other locations worldwide	+518.233.2500	CHEMTREC: +1-703.527.3887 (collect)
At sea	Radio U.S. Coast Guard, which can directly contact Momentive Performance Materials at 518.233.2500 or CHEMTREC at 800.424.9300.	

DO NOT WAIT. Phone if in doubt. You will be referred to a specialist for advice.

CUSTOMER SERVICE CENTERS

North America	E cs-na.silicones@momentive.com		
	• Specialty Fluids	T +1.800.523.5862	F +1.304.746.1654
	• UA, Silanes and Specialty Coatings	T +1.800.334.4674	F +1.304.746.1623
	• RTVs and Elastomers	T +1.800.332.3390	F +1.304.746.1623
	• Consumer Sealants & Construction Sealants and Adhesives	T +1.877.943.7325	F +1.304.746.1654
Latin America	E cs-la.silicones@momentive.com		
	• Argentina & Chile	T +54.11.4862.9544	F +54.11.4862.9544
	• Brazil	T +55.11.4534.9650	F +55.11.4534.9660
	• Mexico & Central America	T +52.55.2169.7670	F +52.55.2169.7699
	• Venezuela, Ecuador, Peru, Colombia & Caribbean	T +58.212.285.2149	F +58.212.285.2149
Europe, Middle East, Africa and India	E cs-eur.silicones@momentive.com	T +00.800.4321.1000 T +40.21.3111848	
Pacific	E cs-ap.silicones@momentive.com		
	• China	T +1.800.820.0202 or T +86.21.3860.4892	F +86.21.5079.3725
	• Japan	T +0120.975.400 or T +81.276.20.6182	F +81.276.31.6259
	• Korea	T +82.2.6201.4600	F +82.2.6201.4601
	• Malaysia	T +60.3.9206.1532	F +60.3.9206.1533
	• Thailand	T +662.207.3456	F +66.2207.3488
Worldwide Hotline		T +1.607.786.8131 T +1.800.295.2392	F +1.607.786.8309

Visit us at Momentive.com



Momentive Performance Materials
22 Corporate Woods Boulevard
Albany, NY 12211

*Silquest, A-Link, Silquest A-171, Silquest A-1100 and SPUR+ are trademarks of Momentive Performance Materials Inc. Momentive is a trademark of Momentive Performance Materials Holdings LLC. Copyright 2003-2011 Momentive Performance Materials Inc. All rights reserved.

MOM-112-101-30E-GL 02/11 Printed in U.S.A.

THE MATERIALS, PRODUCTS AND SERVICES OF MOMENTIVE PERFORMANCE MATERIALS INC., MOMENTIVE PERFORMANCE MATERIALS USA INC., MOMENTIVE PERFORMANCE MATERIALS ASIA PACIFIC PTE. LTD., MOMENTIVE PERFORMANCE MATERIALS WORLDWIDE INC., MOMENTIVE PERFORMANCE MATERIALS GmbH, THEIR SUBSIDIARIES AND AFFILIATES DOING BUSINESS IN LOCAL JURISDICTIONS (collectively "SUPPLIERS"), ARE SOLD BY THE RESPECTIVE LEGAL ENTITY OF THE SUPPLIER SUBJECT TO SUPPLIERS' STANDARD CONDITIONS OF SALE, WHICH ARE INCLUDED IN THE APPLICABLE DISTRIBUTOR OR OTHER SALES AGREEMENT, PRINTED ON THE BACK OF ORDER ACKNOWLEDGMENTS AND INVOICES, AND AVAILABLE UPON REQUEST. ALTHOUGH ANY INFORMATION, RECOMMENDATIONS, OR ADVICE CONTAINED HEREIN IS GIVEN IN GOOD FAITH, SUPPLIERS MAKE NO WARRANTY OR GUARANTEE, EXPRESS OR IMPLIED, (i) THAT THE RESULTS DESCRIBED HEREIN WILL BE OBTAINED UNDER END-USE CONDITIONS, OR (ii) AS TO THE EFFECTIVENESS OR SAFETY OF ANY DESIGN INCORPORATING SUPPLIERS' PRODUCTS, MATERIALS, SERVICES, RECOMMENDATIONS OR ADVICE. AFOREMENTIONED EXCLUSIONS OR LIMITATION OF LIABILITY ARE NOT APPLICABLE TO THE EXTENT THAT THE END-USE CONDITIONS AND/OR INCORPORATION CONDITIONS CORRESPOND TO THE RECOMMENDED CONDITIONS OF USE AND/OR OF INCORPORATION AS DESCRIBED BY SUPPLIER IN ITS PRODUCT DATA SHEET AND/OR PRODUCT SPECIFICATIONS. EXCEPT AS PROVIDED IN SUPPLIERS' STANDARD CONDITIONS OF SALE, SUPPLIERS AND THEIR REPRESENTATIVES SHALL IN NO EVENT BE RESPONSIBLE FOR ANY LOSS RESULTING FROM ANY USE OF ITS MATERIALS, PRODUCTS OR SERVICES DESCRIBED HEREIN.

Each user bears full responsibility for making its own determination as to the suitability of Suppliers' materials, services, recommendations, or advice for its own particular use. Each user must identify and perform all tests and analyses necessary to assure that its finished parts incorporating Suppliers' products, materials, or services will be safe and suitable for use under end-use conditions. Nothing in this or any other document, nor any oral recommendation or advice, shall be deemed to alter, vary, supersede, or waive any provision of Suppliers' Standard Conditions of Sale or this Disclaimer, unless any such modification is specifically agreed to in a writing signed by Suppliers. No statement contained herein concerning a possible or suggested use of any material, product, service or design is intended, or should be construed, to grant any license under any patent or other intellectual property right of Suppliers or any of its subsidiaries or affiliates covering such use or design, or as a recommendation for the use of such material, product, service or design in the infringement of any patent or other intellectual property right.